

HEALTH REQUIREMENTS

Healthy and safe pets are our TOP PRIORITY. To ensure a safe environment, all pets that come to stay with us for the day require a **yearly physical exam** with one of our doctors to establish them as patients of our practice and make our medical team aware of any potential health concerns. Dogs also will require the following vaccines and preventive services to keep everyone healthy and happy:

- Yearly Physical Examination**
- Rabies
- DA2PL**
(Canine Distemper/Leptospirosis)
- CPV-CV**
(Canine Parvovirus/Coronavirus)
- Bordetella**
- Canine Influenza
- Annual Fecal Examination**
- Semi-Annual Preventive Deworming**

We are more than happy to accept records containing vaccines, fecal exams, and preventive deworming from other veterinary practices. A physical exam from another veterinary practice does not qualify.

Upon making your appointment or reservation for any of our day boarding services, be sure to provide the documentation of vaccines or information for our Client Service Representatives to obtain the records on your behalf.

PLAYCAMP PRICING

DAY PLAYCAMP

Single Day
\$25 per day
\$15 as a boarding add-on

PLAYCAMP PACKAGES

12-Day Value Package
\$250 per package
 12-Day Value Packages expire after 60 days.

MONTHLY PLAYCAMP MEMBERSHIP

\$349 per month
 Recommended for dogs coming 13 or more of the 25 available days per month.

YEARLY PLAYCAMP MEMBERSHIP

Half due at sign up with monthly payments for remainder.
\$3,499 per year

PLAYCAMP PLATINUM MEMBERSHIP

Half due at sign up with monthly payments for remainder.
\$3,999 per year

See within for more information on the added benefits of Playtime Platinum Membership.

PLAYCAMP TRAINING

We also offer basic obedience training sessions.
\$60 per day session
\$40 per session w/ boarding
\$480 for 12-day package

Payment is expected at the time of services rendered. All memberships are required to be paid for at time of enrollment. For your convenience, we accept cash, major credit cards, as well as Care Credit payment options.

WPVH PLAYCAMP CENTER



PLAYCAMP CENTER HOURS

Monday - Friday 7:00 AM – 6:30 PM
Saturday* 8:00 AM – 1:30 PM
Sunday Closed

* Saturday hours are for Overnight Campers and PlayCamp Platinum Members only.



WINTER PARK VETERINARY HOSPITAL

1601 Lee Road
 Winter Park, FL 32789
 (407) 644-2676
www.wpvvet.com



WHY US?



Winter Park Veterinary Hospital provides a unique, unrivaled blend of convenience, service and expertise that combines the quality and convenience of your trusted veterinary hospital with a doggie day care center. Our Doggie PlayCamp Center is newly renovated; climate controlled, and fully equipped to provide your dog with a safe, fun, exciting and enriching day of group play and socialization. We also provide basic obedience training and incorporate these basic commands into many of our playgroups.

OUR PLAYCAMP CENTER

Our Doggie PlayCamp Center includes indoor and outdoor play zones, artificial turf and natural grass play areas, and multiple options for play in all types of weather and conditions. Playing dogs have access to fun puppy playground equipment in order to enhance their playtime experience.

Feel free to ask a Client Service Representative to schedule a tour of our beautiful Doggie PlayCamp Center!



CAMP COUNSELORS

People are important. Our Camp Counselors provide expert knowledge and care for your dog throughout the day so you will have the peace of mind of knowing they are safely enjoying their day. Our medical team is seconds away for your convenience and your dog's safety.

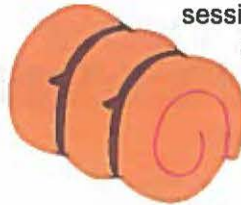


YOUR DOG'S CAMP DAY

All campers undergo a thorough evaluation during their initial playtime session in order to determine if socialization with other dogs is recommended for their personality type. Dogs are also split into playtime groups depending on size, personality, and overall playfulness!



A typical day of playtime begins at arrival to the PlayCamp Center. Your dog goes out for a potty break and is then given relaxation time before beginning the first morning playtime session. This session is followed up with a treat break, followed by naptime. After the first nap, your dog then begins the lunchtime play session. Another treat break and resting period is followed by the longest playtime session in the evening before they are picked up at the end of the day.



A typical day of playtime may vary from this example depending on the weather and the specific needs of your dog's play group.

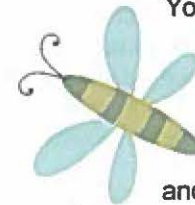


PACKAGES

For casual use of the Doggie PlayCamp Center, we also offer 12-Day Packages for use over a 60-day period.

MEMBERSHIPS

Your convenience is our priority. We offer monthly and yearly PlayCamp Memberships for guests who enjoy exercise and socialization multiple times a week! Participating in monthly and yearly membership options provides the ultimate in convenience and value. Please see the back of the brochure for our monthly and yearly membership pricing!



PLAYCAMP PLATINUM

For people who really want to spoil their dog we have our Platinum Membership. The PlayCamp Platinum Membership is designed to provide you with the highest levels of convenience while spoiling your dog at every level.



- **Canine Concierge Service:** Your dog's favorite bedding and toys from home will be provided during their rest times for the ultimate in-home experience.
- A **deluxe-sized kennel** is reserved especially for your dog for the entire duration of the membership.
- Availability for **playtime is guaranteed** for your dog at all times.
- **Treat bags** are included.
- Your dog will also receive a **courtesy bath and pedicure** at the end of the week to assure they are fresh and clean for the weekend (not available for boarding).
- **Playtime hours on Saturdays** are reserved only for boarding dogs and PlayCamp Platinum members.